



# Mount Sinai

**Real Estate Division**  
1249 Park Avenue, 1<sup>st</sup> Floor  
New York, NY 10029  
Tel: (212) 659-9630  
Fax: (212) 831-3093

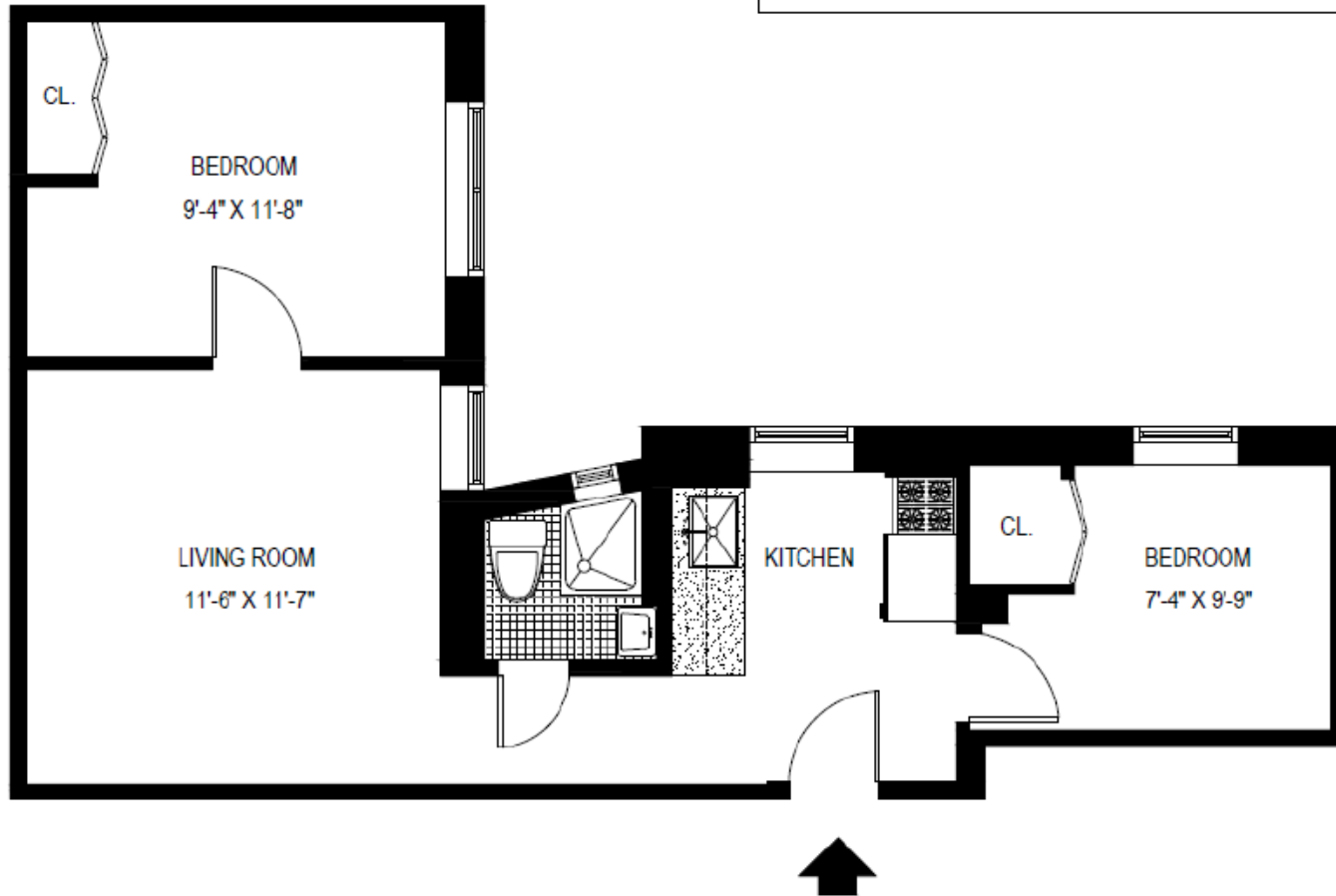


<b>ADDRESS:</b>	<b>68 EAST 97<sup>th</sup> STREET, NEW YORK, NY</b>
<b>LOCATION:</b>	<b>E 97<sup>th</sup> Street between Madison and Park Avenue</b>
<b>YEAR BUILT:</b>	<b>1906</b>
<b>NUMBER OF STORIES:</b>	<b>6</b>
<b>UNIT TYPES:</b> (subject to availability)	<b>2 Bedroom, 3 Bedroom</b>
<b>TYPE OF BUILDING:</b>	<b>Non Doorman/Walk-up</b>
<b>LAUNDRY:</b>	<b>None</b>
<b>PLAYGROUND:</b>	<b>None</b>
<b>PARKING GARAGE:</b>	<b>None</b>
<b>ACCESSIBILITY:</b>	<b>Subway access to #6 train. MTA bus service along main avenues and thoroughfares.</b>

For further information email [housing@mountsinai.org](mailto:housing@mountsinai.org)

ADDRESS: 68 EAST 97TH STREET, NEW YORK, NY 10029

2 BEDROOMS, TYPICAL  
AREA: 477 Sq. Ft.





Mount  
Sinai

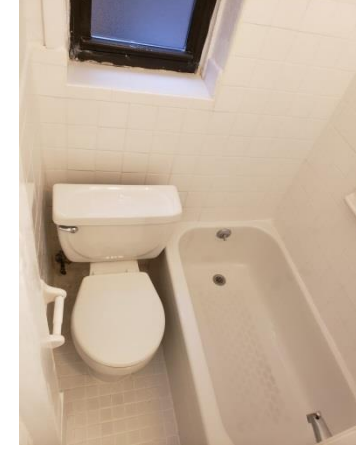
## Sample Pictures of Apartments for 68 East 97<sup>th</sup> Street

### Two Bedroom



- Pictures are of Apt. 1 (Kitchen, Bathroom, Bedroom 1 of 2, Living Room).

### Two Bedroom



- Pictures are of Apt. 10 (Bathroom, Kitchen, Bedroom 1, Bedroom 2).

**Note: These are samples pictures of the apartments and in some cases not all apartments contain the same features.**